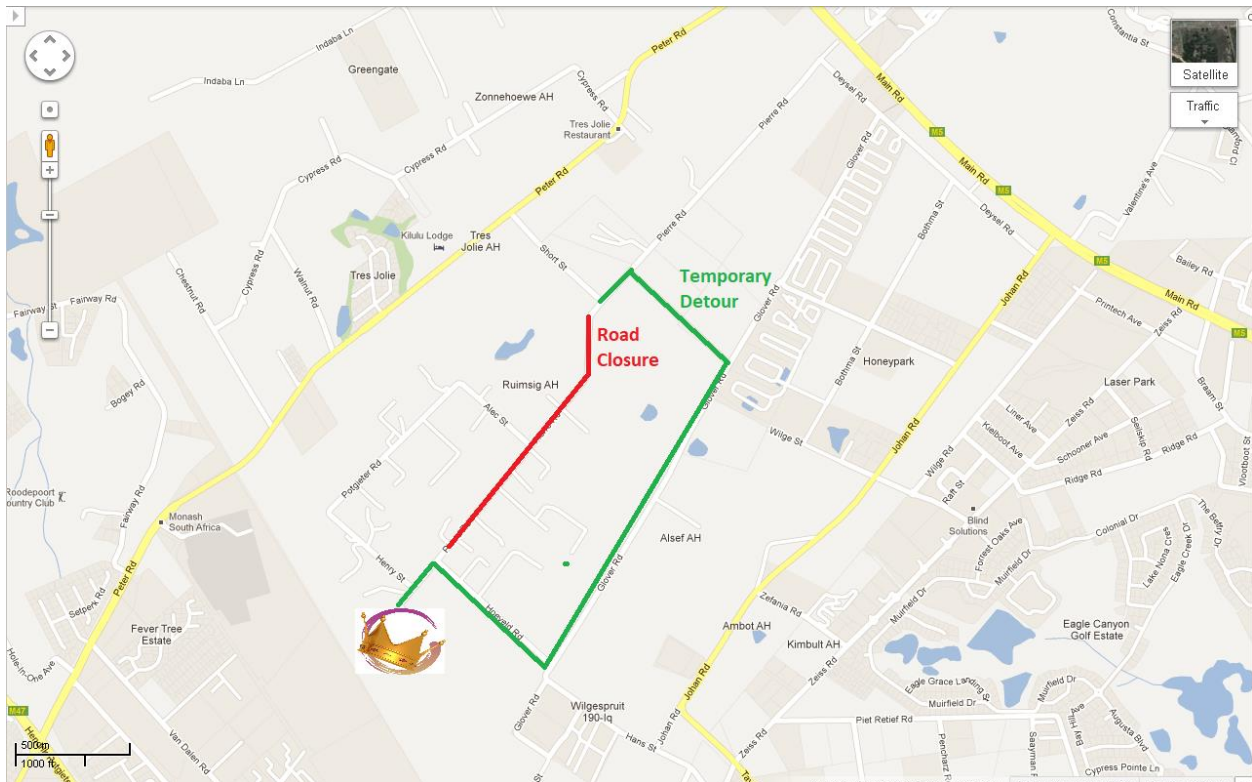


# Kinglets Kids

Where your kids are Royalty



## Map and directions



Phone:

079 736 7113

Email:

[info@kinglets.co.za](mailto:info@kinglets.co.za)

Website:

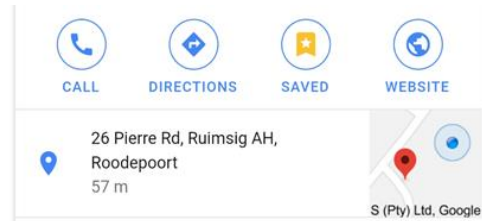
[www.kinglets.co.za](http://www.kinglets.co.za)

Address: 26 Pierre Road, Ruimsig AH, Gauteng

GPS co-ordinates: S 26° 5.158'  
E 27° 53.169'

If you insert Kinglets & Queenies on your smartphone, you will be able to find Google map directions

### Directions from Hendrik Potgieter / Clearwater Mall:



- Clearwater is on your left, drive on Hendrik Potgieter in the direction of Krugersdorp
- After 1.4 km, turn right onto Nic Diederichs Road. You will see Retail Crossing on your right
- At the 3<sup>rd</sup> traffic light, turn left onto Taylor Road. You will see the Sasol Garage on your opposite right
- At the T-Junction, turn left into Johan Road
- At the T-Junction, turn right into Glover Road and follow the road around a 90° bend to the right
- Directly after the bend, turn left into Hoefeld Road
- At the T-Junction, turn left into Pierre Road
- After the dead-end sign, you will find Kinglets & Queenies on you left!

### Directions from R28 Pinehaven intersection (Using a short gravel road):

A low-level bridge recently collapsed in Pierre Road, resulting in a road closure between Short Road and our venue. You will still be able to visit our venue from that side, but you will have to make use of a detour via Glover road.

- From Krugersdorp, turn right onto Hendrik Potgieter at R28 / Pinehaven intersection
- After 5.1 km, turn left onto Peter Road. You will see the Caltex garage on your right
- At the 3<sup>rd</sup> traffic light, turn right into Short Road. You will see Fanel Glass Factory on your right side
- At the T-Junction, turn left onto Pierre Road
- Turn right into the first gravel Road, Plein street, that you encounter on your right (Before Amadwala Lodge).
- At the T-Junction, turn right onto Glover Road (this tar road turns into a gravel road)
- As soon as the Road becomes a tar Road again, you will encounter a stop sign
- At the stop sign, turn right into Hoefeld Road
- At the T-Junction, turn left into Pierre Road
- After the dead-end sign, you will find Kinglets & Queenies on you left!

### Directions from N14:

- Take Zwartkop / Randburg Offramp
- From Pretoria, turn left onto into Beyers Naude (M5) / From Krugersdorp, turn right onto into Beyers Naude
- After 7.8 km, turn right onto Johan Road. You will see Speed Space on your left
- After 2.9 km, at the T-Junction, turn right into Glover Road and follow the road around a 90° bend to the right
- Directly after the bend, turn left into Hoefeld Road
- At the T-Junction, turn left into Pierre Road
- After the dead-end sign, you will find Kinglets & Queenies on you left!

### Directions from N1:

- Take exit 85 for Beyers Naude / M5
- From South Rand, merge into Beyers Naude towards Honeydew / From Sandton, turn right into Beyers Naude

- After 7.1 km, turn left onto Johan Road. You will see Speed Space on your right
- At the T-Junction, turn right into Glover Road and follow the road around a 90° bend to the right
- Directly after the bend, turn left into Hoeveld Road
- At the T-Junction, turn left into Pierre Road
- After the dead-end sign, you will find Kinglets & Queenies on your left!